



# Garibaldi Secondary School Newsletter

## Fall - Start up

<https://gss.sd42.ca/>

### Welcome Back

I hope you are enjoying your summer and are looking forward to start up! I would like to take this opportunity to share with you some information about school start up. Our main communication platform is the school website. Please find it at [gss.sd42.ca](https://gss.sd42.ca) and make this your first point of contact with the school. The GAZETTE can be viewed on the main page and is updated daily. Here you will find all the latest school news, information including Parent Information Evenings, and Parent Advisory Committee agendas and minutes. All teacher email addresses and additional school contact information is posted. Newsletters will be posted to: <https://secondary.sd42.ca/gss/gss-newsletters>. We take pride in updating the website frequently.

Student timetable will be available August 28- 30 in the "Myclass system". The exact timing of the posting is to be determined as I type. **We will continue to balancing classes in the days that follow so these timetables need to be considered as draft.** Timetable changes will be serviced in the first few weeks of school in a priority order, Grade 12 to Grade 8. While counsellors are in the week prior to school this is to service new student registrations and other emergent issues. There are no drop in course / timetable changes.

Garibaldi is an International Baccalaureate Middle Years Programme (MYP) and Diploma Programme (DP) school. There are only 3 public schools in BC to obtain this level of accreditation. We are proud of our status.

The Middle Years Programme is an INCLUSIVE, WHOLE SCHOOL programme that is offered to more than 1 million students in over 3,700 schools in 147 countries. The Middle Years Programme focuses on developing critical, creative, and reflective thinkers within a global perspective. It encourages students to make connections between their studies and the real world. The new provincial curriculum for grades 8 and 9, which are being fully implemented this year, aligns with the IB Middle Years Programme. The new curriculum places emphasis on student inquiry, big ideas, competencies, and global awareness, all part of the IB Middle Years Programme.

The International Baccalaureate Diploma Programme challenges students in advance curriculum. Upon completion it may allow students to obtain first year university in a single or variety of subjects. IB-DP is an optional program beginning in grade 11. Students can participate in a single course "certificate" or complete diploma. The IB-DP information is available online at: <https://gssib.sd42.ca>.

Be sure to check out our website you'll find our school has lots offer for those returning. Have a great end of summer.

Respectfully, Ian Liversidge



**GSS Newsletter**



**Fall**

## Update to Code of Conduct Re: Cell Phones Sept 2024:

Garibaldi Students will only be permitted to access cell phones during class time if directed by teachers for educational purposes.

This will include tutorial time. Students can freely access their phones before school, at lunch, class transition, and after school. If there is an emergency and parents need to connect to their student during school hours, please contact the front office. The only exceptions to this rule will be students who need their devices to monitor their health. Examples include blood glucose level or other medical purposes. Please inform the school if your student has a medical reason to use an electronic device. The implementation of this systemic change was directed by the Premier in order to ensure student attention is focused on social connection, academic achievement, and building interpersonal skills. Teachers have always had the individual discretion to institute their own technology policy and many teachers already have cell phone bans / policy in place. However, the desire for this systemic change was universally expressed by the staff, and recently has been expressed by the Premier of BC. Students, inevitably, will use computers and cell phones as part of their learning because teachers recognize the power of these tools. We will be seeking feedback from teachers, students, and parents later in the year to see how this policy influences classroom success and behaviour. We hope that all parents and caregivers will support our staff's efforts to create a positive and productive learning environment. Please see a link to an article regarding a similar policy instituted by a school on the Sunshine Coast: <https://www.vicnews.com/news/b-c-school-teens-showed-improved-grades-and-social-skills-after-a-ban-01-phones-114206>

### Start Top Schedule

#### For Incoming Grade 8 Students:

GSS supports the Link Crew initiative. Link Crew is a high school transition program that aims to make grade 8 students feel comfortable and connected during their first year of high school. The program is built on the belief that students can help students succeed. Link Crew follows a proven method of training senior students to be Link Crew mentors throughout the year.

On the first day of school, grade 8 students will attend a special orientation led by our student Link Crew Leaders & Link Crew teachers, Ms. Lemieux & Mrs. Gibbs

FIRST TUESDAY,

**9:30AM** (Updated) – Grade 8 students will arrive at the gym to meet with the link crew and staff.

**10:15AM - 11:30 AM** – Link Crew leaders will lead the small group activities and orientation

**11:00AM – 11:45AM** – Gr 8 to Blk A Class with Link leaders

**12:00** Gr 8 Dismissal

FIRST WEDNESDAY and BEYOND Are regular full days.

#### For Grade 9 - 12 Students:

FIRST TUESDAY

For all Grade 9 – 12 Students:

Grade 9 to 12 students will need to determine their homeroom / Blk A class in MyClass or, by looking at posted located in the main entrance hallway the library hallway and the theatre entrance. These lists will be inside the school and not be available “through the windows”.

**12:30 PM** – Grade 9 - 12 Report to homeroom / Blk A. At this time there will be fee collection (if fees are not paid by portal), locker distribution and paper timetable distribution.

**1:30** - Approx Dismissal

FIRST WEDNESDAY and BEYOND

A regular full days.



Are you interested in welcoming an International Student into your home and sharing the experience of being part of a Canadian family?

We are always looking for great host families!



**MAPLE RIDGE  
PITT MEADOWS**  
INTERNATIONAL PROGRAM

[www.inted.sd42.ca](http://www.inted.sd42.ca) @intedsd42 [www.facebook.com/IntEd.SD42](https://www.facebook.com/IntEd.SD42)

**FOR MORE INFORMATION  
PLEASE CONTACT:**

International Education  
Maple Ridge-Pitt Meadows School District  
20575 Thorne Ave., Maple Ridge,  
BC, V2X 9A6, Canada

604-466-6555  
<https://inted.sd42.ca/homestay>



# GARIBALDI SEC

Check  
Microsoft Teams  
and GSS Grad 2025

*GRAD NEWSLETTER Supporting Parents and Students of the*

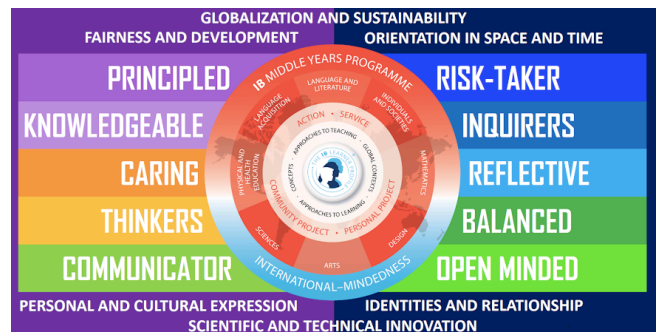
*GSS 2025 Graduating Class*

## Grade 12's

**Please be sure to get your copy of the Grad Newsletter at the Gr 12 assembly.**

**Mark your calendar for the mandatory monthly assembly dates.**

Excessive absences can interfere with participation in the graduation ceremonies. Every school in the district maintains guidelines that limit absences to the equivalent of 15 days per year. Students who exceed this limit may not be allowed to participate in the grad ceremony. If you have any questions or want to review your students attendance



## Yearbooks

will be sold in a separate Portal Message. Complete the online form for \$65. This year's Yearbook will be one that you truly want to have. Last year there were many disappointed students as we sold out.

**Cash payment must be made to the office within 2 business days of the portal message.**



**GSS Newsletter**





## First Peoples Principles of Learning.

In the last decade, the British Columbia Ministry of Education has indicated an increasing commitment to including the First Peoples (or Aboriginal) perspectives of teaching and learning in British Columbia schools (British Columbia Ministry of Education, 2013-2014). Initial integration of First Peoples' content into various curricula was initially intended to support the success of Aboriginal learners; however the principles that govern traditional First Peoples' perspectives of teaching and learning have gained a more prominent place in the BC education system as educators are recognizing that they promote educational practice that is also effective for non-Aboriginal learners.

From: <https://firstpeoplesprinciplesoflearning.wordpress.com/>



## School Athletics

School athletics continue to grow in the school year. The school athletics seasons are identified as fall, winter and spring. Sign up for fall sports will begin promptly in September. The fall athletic season is highlighted by all volleyball teams, boys soccer, and cross country. More at: <https://secondary.sd42.ca/gss/sports-clubs>

Athletic fees are \$30 per person per team. Funds are used to support the cost of community referees and other related fees.





## Collaboration Days

Collaboration days allow teachers to meet, and collaborate in support of students and improved teacher planning. For this academic year these collaboration sessions will create early dismissals for students. While students can remain in the building, teachers and EAs are otherwise engaged.

### Student Sign Out, and Sign In.

If a student arrives after 9 am they are expected to sign in at the office. A sign in book is located outside the main office. Students leaving early for the day do so with parent permission. Typically a prior phone message, portal message or parent note is supplied. Text messages are not accepted as parent permission. Students are then required to sign out at the office.

**Communication - Gazette , Parent Portal.** The Parent Portal is a SD 42 developed software that supports parental permissions, field trips and credit card payments. It is an important communication platform that we use in many situations. Please ensure that you are connected. In the event you are not receiving notifications through the Parent Portal please contact our Admin Coordinator Ms. Montgomery at: [Jacqueline\\_Montgomery@sd42.ca](mailto:Jacqueline_Montgomery@sd42.ca) and ask for a "Linking Letter".

Maintaining contact with parents and students is important to us. We rely upon email, the parent portal, Facebook, Twitter and the planner app to keep families abreast of what's going on. You can follow us on Facebook or Twitter. The Gazette on the school website is updated daily. If you haven't been receiving emails this year, you'll need to resubscribe. We strongly encourage parents to do this by logging onto the parent portal and subscribing on the login page.

**A Student fees** notification will be sent the first week of school. A \$35 mandatory fee is common in SD 42. Student fees are used to support non-curricular student activities. These are the elements of a school community that bring us connection and greater community. Elements that are more important than ever such as FUND Nights, Dances, and Leadership Events. Although we can take cash payments at the main office, **online payment with the parent portal is preferred.**



### Parent Advisory Committee

The BC School Act gives parents the right to belong to a Parent Advisory Council (PAC) in their school, and through it to advise the board, principal, and staff on any matters relating to the school. It is a place for positive communication and an effective place to learn about the school and school community. Meetings are open for all parents to attend. Past minutes, agendas and upcoming meeting dates are posted to: <https://secondary.sd42.ca/gss/parent-advisory-council/>

**VISITORS  
MUST  
SIGN IN**

**Parent Access** to the school is by appointment only, as per guidelines established to support safety.

Please use staff emails to book appointments, and always report to the office as a visitor and sign in.



**New Grade 8 School Email Login** In an effort to assist the current grade 8 students (staying in district) with a smoother transition to grade 8, the MyEd team has reset all of their MyClass passwords (elementary students don't use MyClass passwords). Incoming grade 8 students have been emailed the link to the MyClass login page, along with their user name and newly generated password student#@me.sd42.ca email account.

Access to the district student email accounts is important. Every grade 8 is encouraged to log in to MyClass to re-enable all of their accounts.

**Attendance Notification:** If your student is ill or if you are planning a holiday, attendance notification can be added to the parent portal. <https://parents.sd42.ca/Parents/ParentLoginPage.aspx> . Failing that, you can contact the office.

Absence reports are collected every morning and added to the daily attendance data. Once the absence is recorded by the office, all the teachers will see the "excused absence".

Grade 12 attendance matters. **Excessive absences can interfere with participation in the graduation ceremonies. Every school in the district maintains guidelines that limits absences to the equivalent of 15 days per year or 60 periods. Students who exceed this limit may not be allowed to participate in the grad ceremony.**

Vacations during school are a great challenge in the school year. Missing a week is equivalent to missing a month in the linear (year-long courses). Teachers cannot be expected to offer separate learning accommodations for a student who chooses to miss an extraordinary amount of time. Please look to support positive choices around schooling..

**MicroSoft Teams** will be the primary software for the digital learning support. In the first section of the school year, we will be working to ensure every student is logged in and proficient with this tool.

**GSS Counsellors** are here and happy to assist you. Walk-ins to the Career Counselling Centre are again accepted. Appointments can be booked during the process outlined at the counselling office.

Lindsey Hine (Gr 9, 11, 12) Ms. Harris (Gr 8,10,12) Pauline Lemieux (Some Gr 12 Academic)

Take a look at our websites for links to resources:  
<https://gss.sd42.libguides.com/c.php?g=715795&p=5103795>  
<https://gsscarrercentre.wordpress.com/>

**Student Information Update.** Please log in to MyClass to view the PDF "BC Student Information Verification Form" showing on the front page under "Published Reports".

**"This document contains the information we currently have on file for your student, including Parent Contacts, Emergency Contacts, any medical information, etc. If any of this information is incorrect, please print the form, handwrite the changes and sign and date the form. Please return the corrected, signed form to the school office so that changes can be made to your student's record."**

Here is the link to the MyClass Information Page: <https://myedbc.sd42.ca/MyClass> If you have any questions, or wish a printed hard copy, please feel free to contact: [gssreception@sd42.ca](mailto:gssreception@sd42.ca)





## Inclement Weather:

The decision whether or not to

close schools due to inclement weather conditions is the responsibility of the Superintendent who must balance safety with the need to provide learning. The Superintendent will use their best judgement to make a school closure decision. The decision making process is complicated by the fact that weather conditions can vary significantly between neighbouring communities, may change and may differ from original forecasts. A final decision is made by 6:00am so that a timely communication process can be initiated.

The decision is posted on the district website <https://www.sd42.ca> and sent to major radio and television outlets such as All News 1130 and CKNW 980.

**SCHOOL APP:** There is a **FREE GSS Planner APP**, download at either the **App Store** or **Google play** - Search **Garibaldi Secondary**

## School Safety Notification System Updated 2019:

The Maple Ridge–Pitt Meadows School District has updated its *School Safety Notification System* in collaboration with the Ridge Meadows RCMP. The revised notification system follows provincial recommendations and covers the six following scenarios:

**Drop, Cover, and Hold** – Used in the event of an earthquake, explosion, or any event that shakes the school.

**Hold and Secure** – Used when there is a security concern, such as a police incident, in the neighbourhood of the school.

**Lockdown** – Used to prevent intruders from entering occupied areas of the school, or in times when it is necessary to isolate students and staff from a danger outside or within the building.

**Shelter in Place** – Used as a short-term measure to protect students and staff from potential dangers outside the school (e.g. environmental weather-related emergencies, dangerous wild animals on school grounds, or a missing child).

**Room Clear** – Used to move people away from a hazard contained in one room/area.

You can find more information about the revised *School Safety Notification System* on the district website at <https://www.sd42.ca/school-safety-notification/>



Maple Ridge - Pitt Meadows School District No. 42 has developed a School Safety Notification System in collaboration with Ridge Meadows RCMP to keep students, staff and volunteers safe. While it is impossible to anticipate all eventualities, the notifications below are used as a guide to conduct these procedures effectively.

 <p><b>DROP, COVER, AND HOLD</b></p> <p>Used in the event of an earthquake, explosion, or any event that shakes the school.</p> <ul style="list-style-type: none"> <li>Quickly move away from obvious hazards</li> <li>DROP low to the ground</li> <li>COVER – take cover under a sturdy table, desks, furniture, or other large sturdy items</li> <li>HOLD ON – to the furniture you are under and stay there until the shaking stops</li> <li>Once shaking stops, wait 60 seconds and then evacuate via the shortest safe route</li> <li>Assemble outside at the designated assembly site</li> </ul>	 <p><b>LOCKDOWN</b></p> <p>Used to prevent intruders from entering occupied areas of the school, or in times when it is necessary to isolate students and staff from a danger outside or within the building.</p> <ul style="list-style-type: none"> <li>Principal/designate will announce "lockdown now," repeating several times</li> <li>Principal/designate will call 911 and the District Education Office (604-463-4200) – only when it is safe to do so</li> <li>Students and staff gather in the nearest secure room.</li> <li>Close and secure doors</li> <li>Turn off lights, close windows and blinds, get down behind heavy furniture or out of sight, stay quiet</li> <li>All students must turn off cellphones</li> <li>Do not respond to anyone at the door, and ignore dismissal bells</li> <li>Remain in lockdown until the room is cleared by authorities</li> </ul>
 <p><b>HOLD AND SECURE</b></p> <p>Used when there is a security concern, such as a police incident, in the neighbourhood of the school.</p> <ul style="list-style-type: none"> <li>Principal/designate to announce "hold and secure," repeating several times</li> <li>Principal/designate to call District Education Office (604-463-4200) to inform of Hold and Secure</li> <li>Lock exterior doors and exterior window blinds, minimize activity in hallway</li> <li>Put sign on front door advising visitors that school is in a Hold and Secure</li> <li>Normal duties may continue within the school</li> <li>Hold and secure will be lifted by an announcement from the principal/designate under direction of RCMP</li> </ul>	 <p><b>SHELTER IN PLACE</b></p> <p>Used as a short-term measure to protect students and staff from potential dangers outside the school (e.g. environmental weather-related emergencies, dangerous wild animals on school grounds, or a missing child).</p> <ul style="list-style-type: none"> <li>Bring everyone into school and remain indoors</li> <li>Secure exterior doors and windows</li> <li>Close exterior window blinds (if available)</li> <li>Turn off all ventilation systems (if available/appropriate)</li> <li>Staff designates will monitor access to school via main entrance</li> <li>Access may be denied if a risk exists that jeopardizes safety of occupants</li> </ul>
 <p><b>EVACUATE</b></p> <p>Used to move people out of the school when a hazard exists inside. May include floods, potential fire, or a bomb threat.</p> <ul style="list-style-type: none"> <li>Students and staff directed to exit school using the safest route</li> <li>Students and staff to assemble outside at a designated assembly site</li> </ul>	 <p><b>ROOM CLEAR</b></p> <p>Used to move people away from a hazard contained in one room/area.</p> <ul style="list-style-type: none"> <li>Students directed to leave the room/area and report to designated area</li> <li>Principal/designate to call for assistance as needed (e.g. principal/sg, custodian, 911, first aid attendants)</li> </ul>

