



Garibaldi Secondary School Newsletter

Sept 2023

<https://gss.sd42.ca/>

Welcome Back Sept 2023

I hope you are enjoying your summer and are looking forward to start up! I would like to take this opportunity to share with you some information about school start up. Our main communication platform is the school website. Please find it at gss.sd42.ca and make this your first point of contact with the school. The GAZETTE can be viewed on the main page and is updated daily. Here you will find all the latest school news, information including Parent Information Evenings, and Parent Advisory Committee agendas and minutes. All teacher email addresses and additional school contact information is posted. Newsletters will be posted to: <https://secondary.sd42.ca/gss/gss-newsletters>. We take pride in updating the website frequently.

Student timetable will be available Tuesday August 29 in the "Myclas system". ***We will be balancing classes in the days that follow so these timetables need to be considered as draft.*** Time table changes will be serviced in the first few weeks of school in a priority order, Grade 12 to Gr 8. While counsellors are in the week prior to school this is to service new student registrations and other emergent issues. There are no drop in course / timetable changes. Garibaldi is an International Baccalaureate Middle Years Programme (MYP) and Diploma Programme (DP) school. There are only 3 public schools in BC to obtain this level of accreditation. We are proud of our status.

The Middle Years Programme is an INCLUSIVE, WHOLE SCHOOL programme that is offered to more than 1 million students in over 3,700 schools in 147 countries. The Middle Years Programme focuses on developing critical, creative, and reflective thinkers within a global perspective. It encourages students to make connections between their studies and the real world. The new provincial curriculum for grades 8 and 9, which are being fully implemented this year, aligns with the IB Middle Years Programme. The new curriculum places emphasis on student inquiry, big ideas, competencies, and global awareness, all part of the IB Middle Years Programme.

The International Baccalaureate Diploma Programme challenges students in advance curriculum. Upon completion it may allow students to obtain first year university in a single or variety of subjects. IB – DP is an optional program beginning in grade 11. Students can participate in a single course "certificate" or complete diploma. The IB DP information is available online at: <https://gssib.sd42.ca>.

Continued on the next page....



GSS Newsletter

Fall 2023



For Incoming Grade 8 Students:

GSS Supports the Link Crew initiative. Link Crew is a high school transition program that aims to make grade 8 students feel comfortable and connected during their first year of high school. The program is built on the belief that students can help students succeed. Link Crew follows a proven method of training senior students to be Link Crew mentors throughout the year.

On the first day of school, grade 8 students will attend a special orientation led by our student Link Crew Leaders & Link Crew teachers, Ms. Lemieux & Mrs. Gibbs

TUESDAY, SEPTEMBER 5TH

9AM – Grade 8 students will arrive at the gym to meet with the link crew and staff.

10:15AM - 11:30 AM – Link Crew leaders will lead the small group activities and orientation

11:30AM – 11:45AM – Link Crew closing assembly

11:45 Approx Gr 8 Dismissal

WEDNESDAY, SEPTEMBER 6TH

A regular full day.

For Grade 9 - 12 Students:

TUESDAY, SEPTEMBER 5TH

For all Gr 9 – 12 Students:

Grade 9 to 12 students will need to determine their homeroom / Blk A class in MyClass or, by looking at posted this located in the main entrance hallway the library hallway and the theatre entrance. These lists will be inside the school and not be available for we can do in through the windows.

12:30 AM – Grade 9 - 12 Report to homeroom / Blk A. At this time there will be fee collection (if fees are not paid by portal), locker distribution and paper timetable distribution.

1:30 - Approx Dismissal

WEDNESDAY, SEPTEMBER 6TH

A regular full day.

SCHOOL FEES:

The following school fees apply and can now be paid on the SD 42 Parent Portal, including:

Student fee \$35 There is a FREE GSS Planner APP, download at either the App Store or Google play - Search Garibaldi Secondary

Yearbook \$65.00 (OPTIONAL)

Used Locks purchase \$5.00 each (OPTIONAL - 2 recommended – one for gym locker)

Required supplies for each course will be outlined by subject teachers. All students require binders, paper, pens, pencils and gym strip for the first week of school.

I look forward to the upcoming school year. We have made many positive additions to our school community. Please do not hesitate to contact the school If you have any questions.

**Grade 8 Parent Night**

We will be hosting a grade 8 parent evening. Grade 8 parents / guardians and students are invited to join us **September 20 between 6 and 8 PM.**

Our plan for the evening is to host an open house walk-about between 6PM and 7PM. At 7PM we will do a presentation in the school theatre outlining our school and highlight the many positive aspects of our school community.

I hope you join us.



GSS Newsletter

Fall 2023



Are you interested in welcoming an International Student into your home and sharing the experience of being part of a Canadian family?

We are always looking for great host families!



**MAPLE RIDGE
PITT MEADOWS**
INTERNATIONAL PROGRAM

www.inted.sd42.ca @intedsd42 www.facebook.com/IntEd.SD42

**FOR MORE INFORMATION
PLEASE CONTACT:**

International Education
Maple Ridge-Pitt Meadows School District
20575 Thorne Ave., Maple Ridge,
BC, V2X 9A6, Canada
604-466-6555
<https://inted.sd42.ca/homestay>



GARIBALDI SEC

Check
Microsoft Teams
and GSS Grad 2024

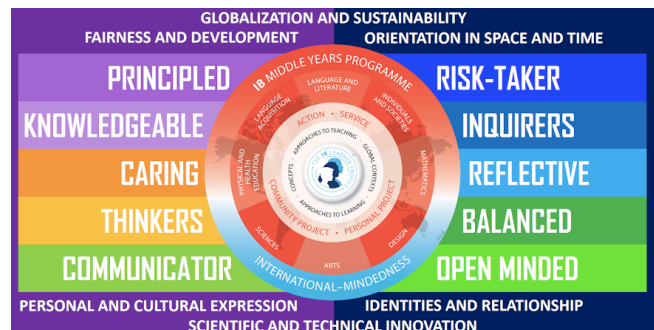
*GRAD NEWSLETTER Supporting Parents and Students of the
GSS 2024 Graduating Class*

Grade 12's

**Please be sure to get
your copy of the Grad
Newsletter at the Gr
12 assembly.**

**Mark your calendar for
the mandatory
monthly assembly
dates.**

Excessive absences can interfere with participation in the graduation ceremonies. Every school in the district maintains guidelines that limit absences to the equivalent of 15 days per year. Students who exceed this limit may not be allowed to participate in the grad ceremony. If you have any questions or want to review your students attendance



Yearbooks

will be sold in a separate Portal Message Starting In October. Complete the online form for \$65. This year's Yearbook will be one that you truly want to have. Last year there were many disappointed students as we sold out.

Cash payment must be made to the office within a week of the portal message.



GSS Newsletter

Fall 2023





First Peoples Principles of Learning. In the last decade, the British Columbia Ministry of Education has indicated an increasing commitment to including the First Peoples (or Aboriginal) perspectives of teaching and learning in British Columbia schools (British Columbia Ministry of Education, 2013-2014). Initial integration of First Peoples' content into various curricula was initially intended to support the success of Aboriginal learners; however the principles that govern traditional First Peoples' perspectives of teaching and learning have gained a more prominent place in the BC education system as educators are recognizing that they promote educational practice that is also effective for non-Aboriginal learners.

From: <https://firstpeoplesprinciplesoflearning.wordpress.com/>



School Athletics

School athletics will be returning to normal in the 2023 - 2024 school year. The school athletics seasons are identified as fall, winter and spring. Sign up for fall sports will begin promptly in September. The fall athletic season is highlighted by all volleyball teams, boys soccer, and cross country. More at: <https://secondary.sd42.ca/gss/sports-clubs>

Athletic fees are \$25 per person per team that is used to support the cost of community referees and some related



GSS Newsletter

Fall 2023





Collaboration Days

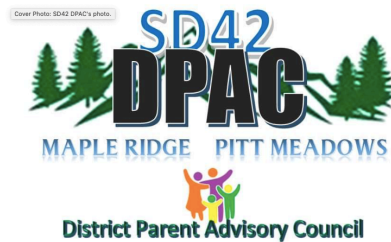
Collaboration days allow teachers to meet, and collaborate in support of students and improved teacher planning. For the 2022 - 2023 academic year these collaborations sessions will create early dismissals or late starts for students. While students can remain in the building, teachers and EAs are otherwise engaged.

Student sign out, and sign in. If a student arrives after 9 am they are expected to sign in at the office. A sign-in book is located outside the main office. Students leaving early for the day do so with parent permission. Typically a prior phone message, portal message or parent note is supplied. Text messages are not accepted as parent permission.

Communication - Gazette , Parent Portal. The Parent Portal is a SD 42 developed software that supports parental permissions, field trips and credit card payments. It is an important communication platform that we use in many situations. Please ensure that you are connected. In the event you are not receiving notifications through the Parent Portal please contact our Admin Coordinator Ms. Montgomery at: Jacqueline_Montgomery@sd42.ca and ask for a "Linking Letter".

Maintaining contact with parents and students is important to us. We rely upon email, the parent portal, Facebook, Twitter and the planner app to keep families abreast of what's going on. You can follow us on Facebook or Twitter. The Gazette on the school website is updated daily. If you haven't been receiving emails this year, you'll need to resubscribe. We strongly encourage parents to do this by logging onto the parent portal and subscribing on the login page.

A Student fees notification will be sent the first week of school. A 28\$ mandatory fee is common in SD 42. Student fees are used to support non-curricular student activities. These are the elements of a school community that bring us connection and greater community. Elements that are more important than ever such as FUND Nights, Dances, and Leadership Events.. Although we can take cash payments at the main office, **online payment with the parent portal is preferred.**



Parent Advisory Committee

The BC School Act gives parents the right to belong to a Parent Advisory Council (PAC) in their school, and through it to advise the board, principal, and staff on any matters relating to the school. It is a place for positive communication and an effective place to learn about the school and school community. Meetings are open for all parents to attend. Past minutes, agendas and upcoming meeting dates are posted to: <https://secondary.sd42.ca/gss/parent-advisory-council/>

**VISITORS
MUST
SIGN IN**

Parent Access to the school is by appointment only, as per guidelines established to support safety.

Please use staff emails to book appointments, and always report to the office as a visitor and sign in.



New Grade 8 School Email Login In an effort to assist the current grade 8 students (staying in district) with a smoother transition to grade 8, the MyEd team has reset all of their MyClass passwords (elementary students don't use MyClass passwords). Incoming grade 8 students have been emailed the link to the MyClass login page, along with their user name and newly generated password student#@me.sd42.ca email account.

Access to the district student email accounts is important. Every Grade 8 is encouraged to log in to MyClass to re-enable all of their accounts.

Attendance Notification: If your student is ill or if you are planning a holiday, attendance notification can be added to the parent portal. <https://parents.sd42.ca/Parents/ParentLoginPage.aspx> . Failing that, you can contact the office.

Absence reports are collected every morning and added to the daily attendance data. Once the absence is recorded by the office, all the teachers will see the "excused absence".

Grade 12 attendance matters. **Excessive absences can interfere with participation in the graduation ceremonies.** Every school in the district maintains guidelines that limits absences to the equivalent of 15 days per year or 60 periods. Students who exceed this limit may not be allowed to participate in the grad ceremony.

In school, vacations are a great challenge in the semester system. Missing a week is equivalent to missing a month in the linear (year-long courses). Teachers cannot be expected to offer separate learning accommodations for a student who chooses to miss an extraordinary amount of time. Please look to support positive choices around schooling at this difficult and atypical time.

MicroSoft Teams will be the primary software for the digital learning support. In the first section of the school year, we will be working to ensure every student is logged in and proficient with this tool.

GSS Counsellors are here and happy to assist you. Walk-ins to the Career Counselling Centre are again accepted. Appointments can be books during the process outlined at the counselling office.

Lindsey Hine (Gr 8,10,12)

Rani Parmar (Gr 9, 11, 12)

Pauline Lemieux (Gd 12 Academic)

Take a look at our websites for links to resources:

<https://gss.sd42.libguides.com/c.php?g=715795&p=5103795>

<https://gsscareercentre.wordpress.com/>

Student Information Update. Please log in to MyClass to view the PDF "BC Student Information Verification Form" showing on the front page under "Published Reports".

This document contains the information we currently have on file for your student, including Parent Contacts, Emergency Contacts, any medical information, etc. If any of this information is incorrect, please print the form, handwrite the changes and sign and date the form. Please return the corrected, signed form to the school office so that changes can be made to your student's record.

Here is the link to the MyClass Information Page: <https://myedbc.sd42.ca/MyClass> If you have any questions, or wish a printed hard copy, please feel free to contact: gssreception@sd42.ca





Inclement Weather:

The decision whether or not to

close schools due to inclement weather conditions is the responsibility of the Superintendent who must balance safety with the need to provide learning. The Superintendent will use their best judgement to make a school closure decision. The decision making process is complicated by the fact that weather conditions can vary significantly between neighbouring communities, may change and may differ from original forecasts. A final decision is made by 6:00am so that a timely communications process can be initiated.

The decision is posted on the district website <https://www.sd42.ca> and sent to major radio and television outlets such as All News 1130 and CKNW 980.



SCHOOL SAFETY NOTIFICATION SYSTEM

MAPLE RIDGE - PITT MEADOWS SCHOOL DISTRICT NO. 42

Maple Ridge - Pitt Meadows School District No. 42 has developed a School Safety Notification System in collaboration with Ridge Meadows RCMP to keep students, staff and volunteers safe. While it is impossible to anticipate all eventualities, the notifications below are used as a guide to conduct these procedures effectively.

<div style="background-color: #f9c94d; padding: 5px; text-align: center; margin-bottom: 10px;">  DROP, COVER, AND HOLD </div> <p>Used in the event of an earthquake, explosion, or any event that shakes the school.</p> <ul style="list-style-type: none"> Quickly move away from obvious hazards DROP low to the ground COVER - take cover under a sturdy table, desks, furniture, or other large sturdy items HOLD ON - to the furniture you are under and stay there until the shaking stops Once shaking stops, wait 60 seconds and then evacuate via the shortest safe route Assemble outside at the designated assembly site 	<div style="background-color: #4caf50; padding: 5px; text-align: center; margin-bottom: 10px;">  LOCKDOWN </div> <p>Used to prevent intruders from entering occupied areas of the school, or in times when it is necessary to isolate students and staff from a danger outside or within the building.</p> <ul style="list-style-type: none"> Principal/designate will announce "lockdown now," repeating several times Principal/designate will call 911 and the District Education Office (604.463.4200) - only when it is safe to do so Students and staff gather in the nearest secure room Close and secure doors Turn off lights, close windows and blinds, get down behind heavy furniture or out of sight, stay quiet All students must turn off cellphones Do not respond to anyone at the door, and ignore dismissal bells Remain in lockdown until the room is cleared by authorities
<div style="background-color: #2196f3; padding: 5px; text-align: center; margin-bottom: 10px;">  HOLD AND SECURE </div> <p>Used when there is a security concern, such as a police incident, in the neighbourhood of the school.</p> <ul style="list-style-type: none"> Principal/designate will announce "hold and secure," repeating several times Principal/designate will call District Education Office (604.463.4200) to inform of Hold and Secure Lock exterior doors and exterior window blinds, minimize activity in hallway Put sign on front door advising visitors that school is in a Hold and Secure Normal duties may continue within the school Hold and secure will be lifted by an announcement from the principal/designate under direction of RCMP 	<div style="background-color: #9c27b0; padding: 5px; text-align: center; margin-bottom: 10px;">  SHELTER IN PLACE </div> <p>Used as a short-term measure to protect students and staff from potential dangers outside the school (e.g. environmental weather-related emergencies, dangerous wild animals on school grounds, or a missing child).</p> <ul style="list-style-type: none"> Bring everyone into school and remain indoors Secure exterior doors and windows Close exterior window blinds (if available) Turn off all ventilation systems (if available/appropriate) Staff designates will monitor access to school via main entrance Access may be denied if a risk exists that jeopardizes safety of occupants
<div style="background-color: #e91e63; padding: 5px; text-align: center; margin-bottom: 10px;">  EVACUATE </div> <p>Used to move people out of the school when a hazard exists inside. May include floods, potential fire, or a bomb threat.</p> <ul style="list-style-type: none"> Students and staff directed to exit school using the safest route Students and staff to assemble outside at a designated assembly site 	<div style="background-color: #00bcd4; padding: 5px; text-align: center; margin-bottom: 10px;">  ROOM CLEAR </div> <p>Used to move people away from a hazard contained in one room/area.</p> <ul style="list-style-type: none"> Students directed to leave the room/area and report to designated area Principal/designate will call for assistance as needed (e.g. principal, custodian, 911, first aid attendant)

School Safety Notification System Updated 2019:

The Maple Ridge-Pitt Meadows School District has updated its *School Safety Notification System* in collaboration with the Ridge Meadows RCMP. The revised notification system follows provincial recommendations and covers the six following scenarios:

Drop, Cover, and Hold – Used in the event of an earthquake, explosion, or any event that shakes the school.

Hold and Secure – Used when there is a security concern, such as a police incident, in the neighbourhood of the school.

Lockdown – Used to prevent intruders from entering occupied areas of the school, or in times when it is necessary to isolate students and staff from a danger outside or within the building.

Shelter in Place – Used as a short-term measure to protect students and staff from potential dangers outside the school (e.g. environmental weather-related emergencies, dangerous wild animals on school grounds, or a missing child).

Room Clear – Used to move people away from a hazard contained in one room/area.

You can find more information about the revised *School Safety Notification System* on the district website at <https://www.sd42.ca/school-safety-notification/>

